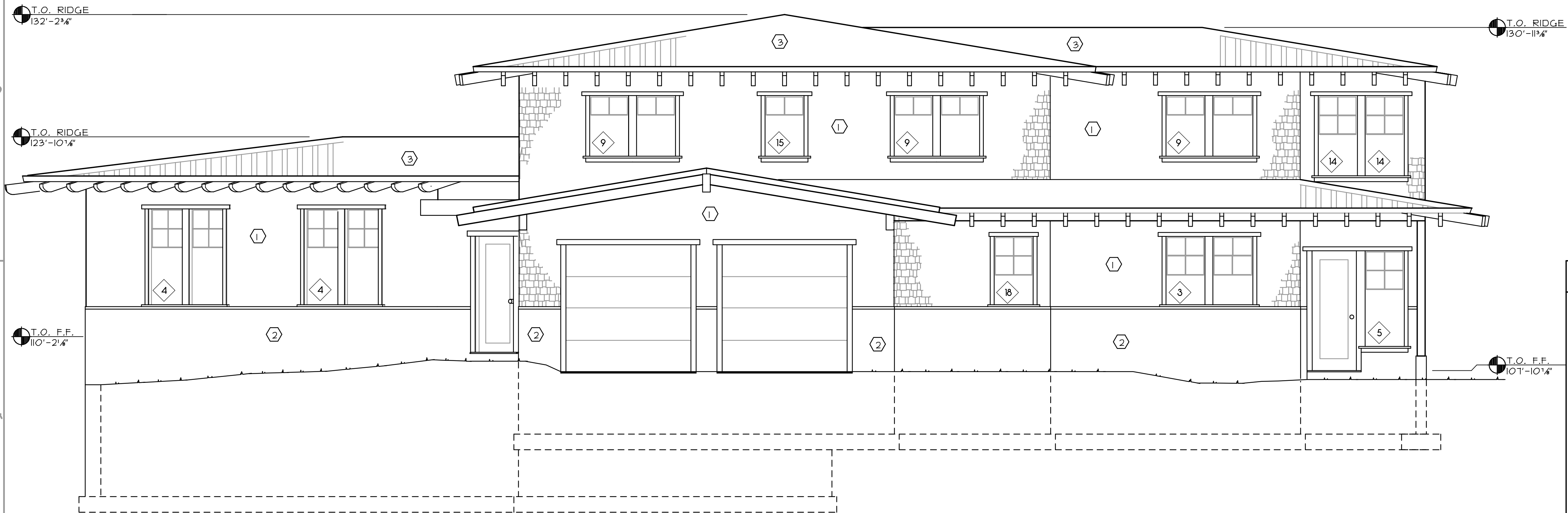


CI SOUTH ELEVATION

1/4" = 1'-0"



AI WEST ELEVATION

1/4" = 1'-0"

SHEET KEYNOTES	
MATERIALS:	
1.	WOOD SHINGLES
2.	3-COAT CEMENT-BASED STUCCO w/ INTEGRAL COLOUR
3.	RAISED-RIB METAL ROOFING w/ ROLLED RIDGE VENTING (SEE C2/S-503 FOR EAVE VENTING DETAIL)
4.	RETAINING WALL (BOULDERS)

All rights reserved. Use of these documents is restricted to the original subject on the original site for which they were prepared. Any reproduction, publication, or reuse by any method, in whole or in part, is expressly limited to such use. Title to these documents remains with TEWINOT BUILDERS.

BID SET: 8 APR, 2004
 PERMIT SET: 12 MAY, 2004
 REVISIONS:

PLOT DATE: Wednesday, May 12, 2004

DWG FILE #: 028-A-202
 DRAWN BY: HS/AO
 CHECKED BY: GG

©2004 by Twinot Builders

TEWINOT BUILDERS
limited liability company
 88 WEST 300 SOUTH
 205 1ST FLOOR
 VICTOR, IDAHO 83455
 info@twinotbuilders.com

PFALTZ-LUCEY RESIDENCE
 515 WEST 525 SOUTH
 VICTOR, TETON COUNTY, IDAHO 83455

SHEET: 4 OF 24
A-202
 S & W ELEVATIONS