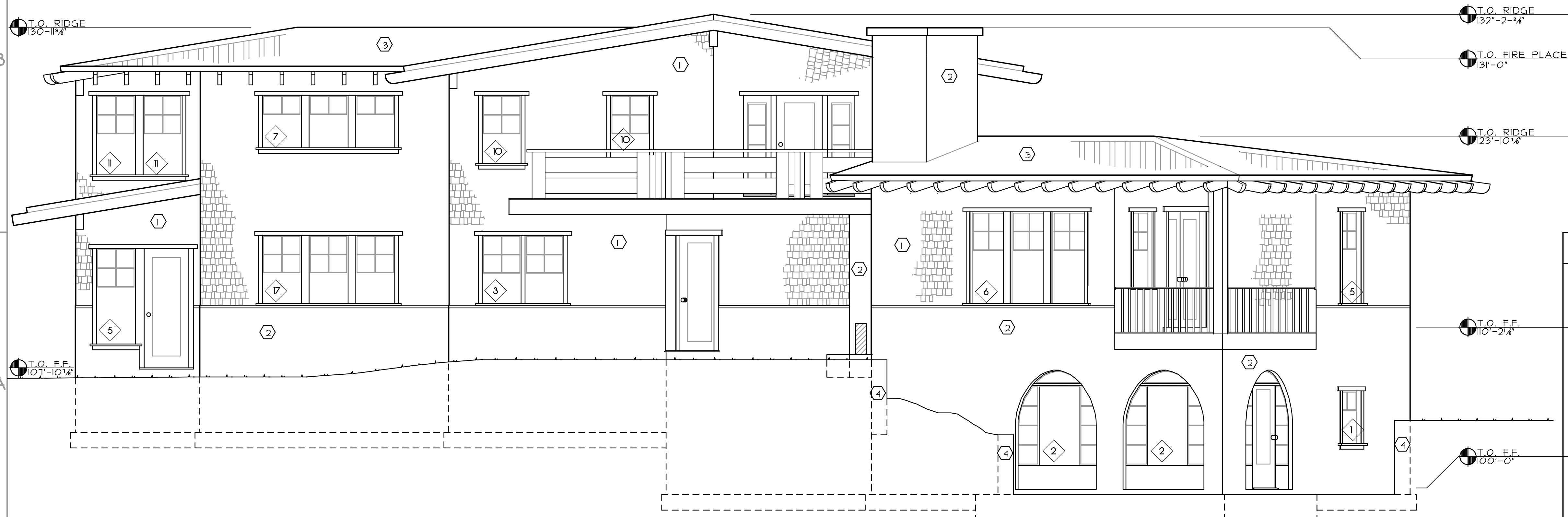


C-1 NORTH ELEVATION

A-201 1/4" = 1'-0"



A1 EAST ELEVATION

A-201 1/4" = 1'-0"

SHEET KEYNOTES

MATERIALS:

1. WOOD SHINGLES
2. 3- COAT CEMENT-BASED STUCCO w/ INTEGRAL COLOUR
3. RAISED-RIB METAL ROOFING w/ ROLLED RIDGE VENTING (SEE C2/S-503 FOR EAVE VENTING DETAIL)
4. RETAINING WALL (BOULDERS)

All rights reserved. Use of these documents is restricted to the original project on the original site for which they were prepared. Any reproduction, publication, or reuse by any method is prohibited. Title to these documents remains with TEEWINOT BUILDERS.

BID SET: 8 APR. 2004
 PERMIT SET: 12 MAY. 2004
 REVISIONS:
 DRAWN BY: HS/AO
 CHECKED BY: GG
 ©2004 by Teewinot Builders
 81 WEST 300 SOUTH
 VICTOR, IDAHO 83455
 www.teewinotbuilders.com

PFALTZ-LUCEY RESIDENCE
 515 WEST 525 SOUTH
 VICTOR, TETON COUNTY, IDAHO 83455

TEEWINOT BUILDERS
 design

SHEET: 5 OF 24
A-201
 N & E ELEVATIONS